

## \$350,000 - 89 2021 Grantham Court, Edmonton

MLS® #E4450662

**\$350,000**

3 Bedroom, 2.50 Bathroom, 1,276 sqft

Condo / Townhouse on 0.00 Acres

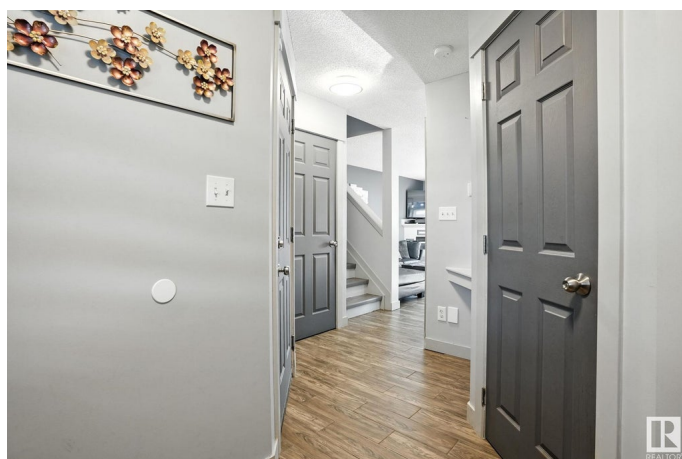
Glastonbury, Edmonton, AB

Move in ready! Superb location! This 3 bedroom 2.5 bathroom half duplex fitsches newer laminate floor on the main floor and and in the basement; minimum carpet- only where you need it- in bedrooms. GRANITE countertops in the kitchen for that modern look and a gas fireplace in the living room for coziness. Open concept layout. Half bathroom on the main floor. Plenty of daylight - your house plants will blossom here! Upstairs you will find 3 generously sized bedrooms and a full bathroom. Basement is a rare gem- large rec room with laminate floor, brand-new bathroom decorated with marble-style tile, and a cute little bar, which is as awesome as it is functional. Add to it a private, fairly- sized backyard with a deck that can feet both a BBQ and patio furniture, and you have it all! Low condo fee. Close to schools, parks, playgrounds, shopping, transit, easy access to Whitemud dr. & A Henday dr.

Built in 2004

### Essential Information

MLS® #	E4450662
Price	\$350,000
Bedrooms	3
Bathrooms	2.50
Full Baths	2



Half Baths	1
Square Footage	1,276
Acres	0.00
Year Built	2004
Type	Condo / Townhouse
Sub-Type	Half Duplex
Style	2 Storey
Status	Active

### **Community Information**

Address	89 2021 Grantham Court
Area	Edmonton
Subdivision	Glastonbury
City	Edmonton
County	ALBERTA
Province	AB
Postal Code	T5T 6V7

### **Amenities**

Amenities	Deck, Front Porch, Gazebo, No Animal Home, No Smoking Home, Parking-Extra
Parking Spaces	3
Parking	Insulated, Single Garage Attached

### **Interior**

Appliances	Dishwasher-Built-In, Dryer, Fan-Ceiling, Garage Control, Garage Opener, Microwave Hood Fan, Refrigerator, Stove-Electric, Washer, Window Coverings
Heating	Forced Air-1, Natural Gas
Fireplace	Yes
Fireplaces	Corner, Mantel
Stories	3
Has Basement	Yes
Basement	Full, Finished

### **Exterior**

Exterior	Wood, Stone, Vinyl
Exterior Features	Fenced, Flat Site, Playground Nearby, Public Transportation, Shopping Nearby

Roof	Asphalt Shingles
Construction	Wood, Stone, Vinyl
Foundation	Concrete Perimeter

**Additional Information**

Date Listed	July 31st, 2025
Days on Market	2
Zoning	Zone 58
Condo Fee	\$259

DATA IS DEEMED RELIABLE BUT IS NOT GUARANTEED ACCURATE BY THE REALTORS® ASSOCIATION OF EDMONTON. COPYRIGHT 2025 BY THE REALTORS® ASSOCIATION OF EDMONTON. ALL RIGHTS RESERVED.Trademarks are owned or controlled by the Canadian Real Estate Association (CREA) and identify real estate professionals who are members of CREA (REALTOR®, REALTORS®) and/or the quality of services they provide (MLS®, Multiple Listing Service®)

Listing information last updated on August 2nd, 2025 at 10:02am MDT